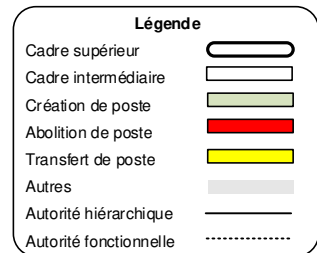
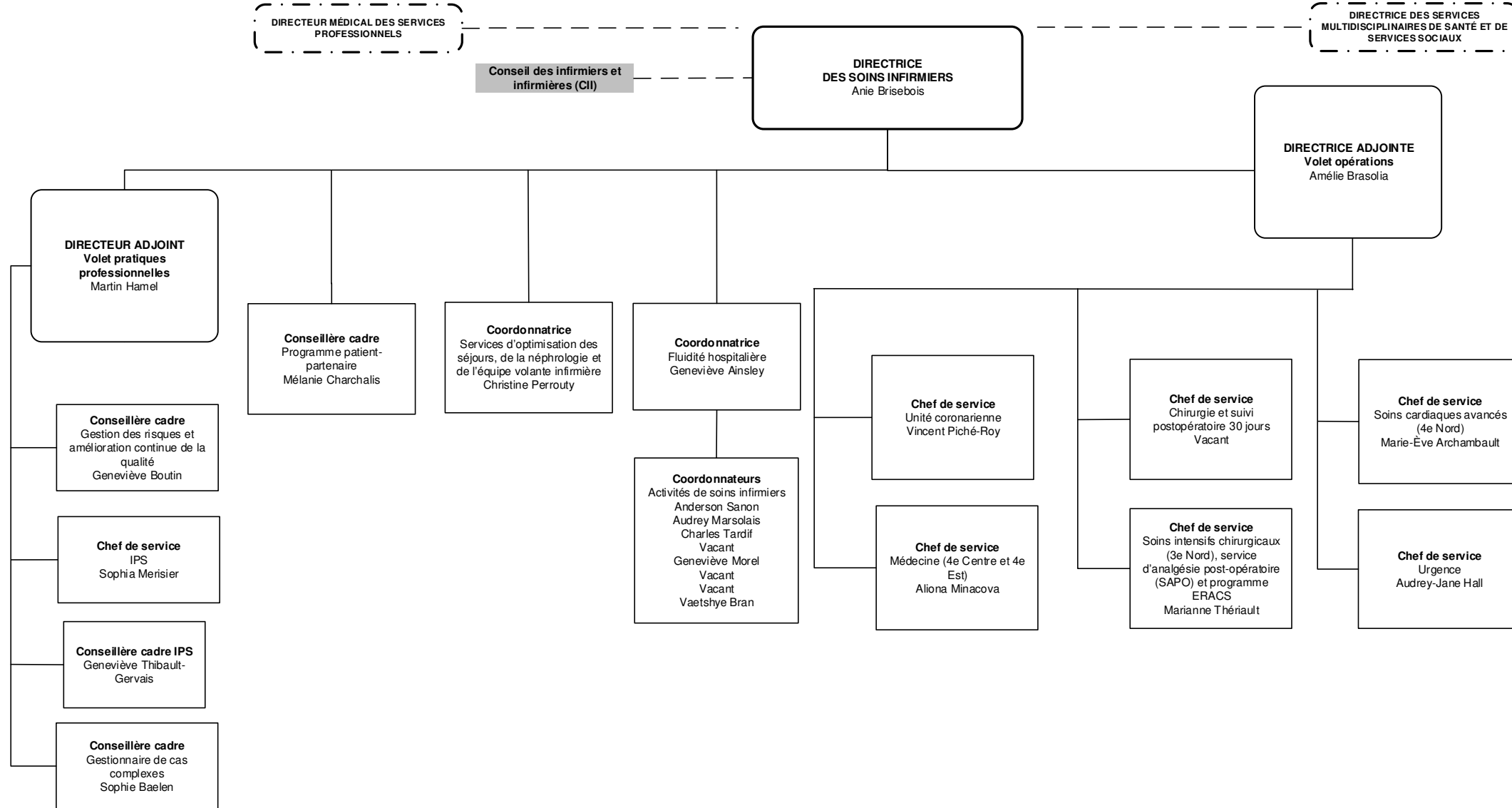
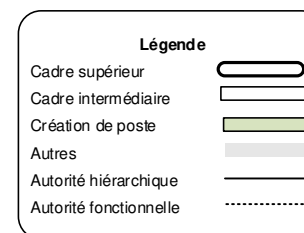
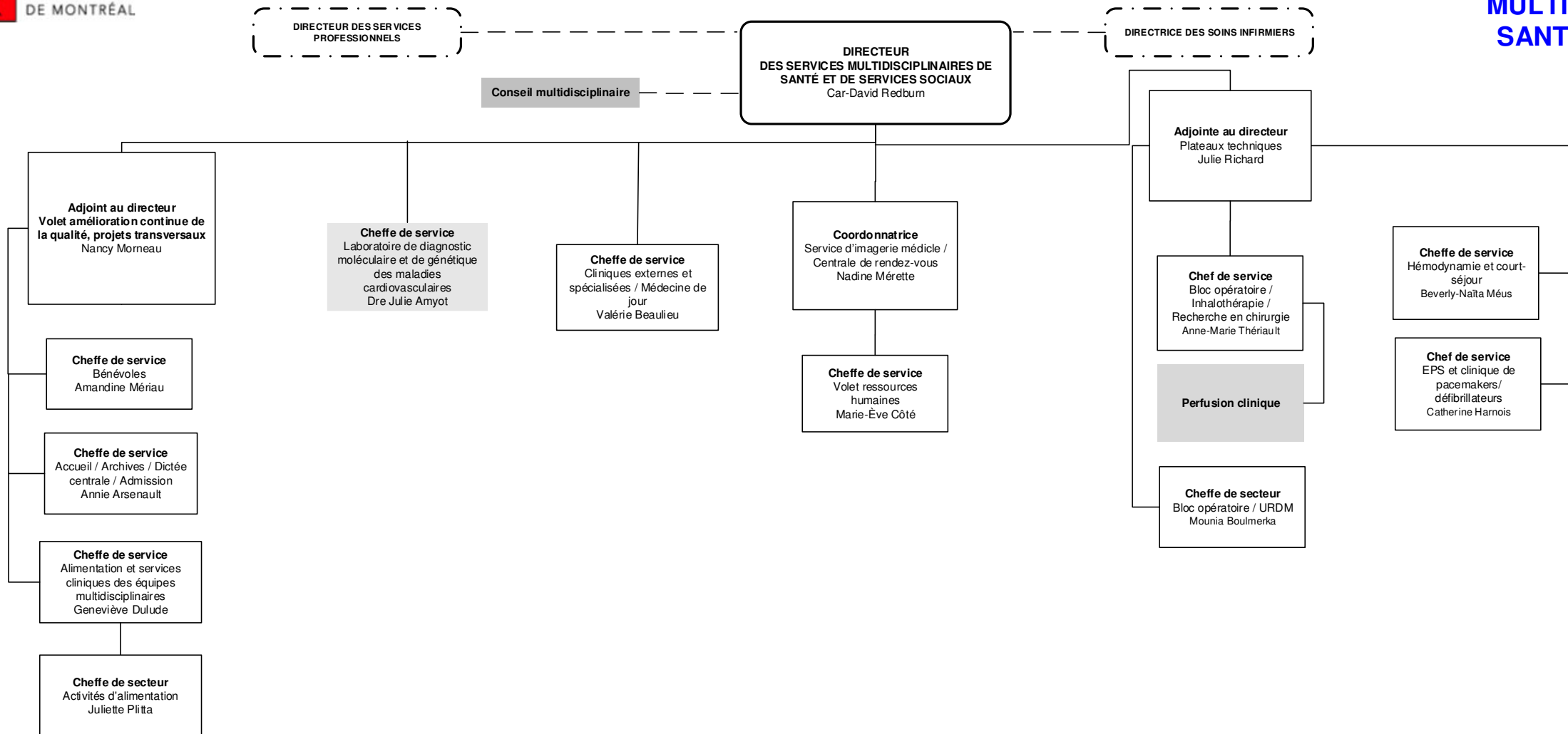
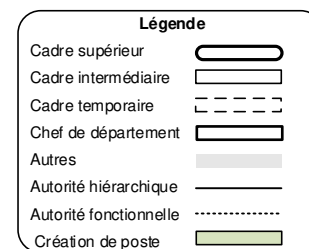
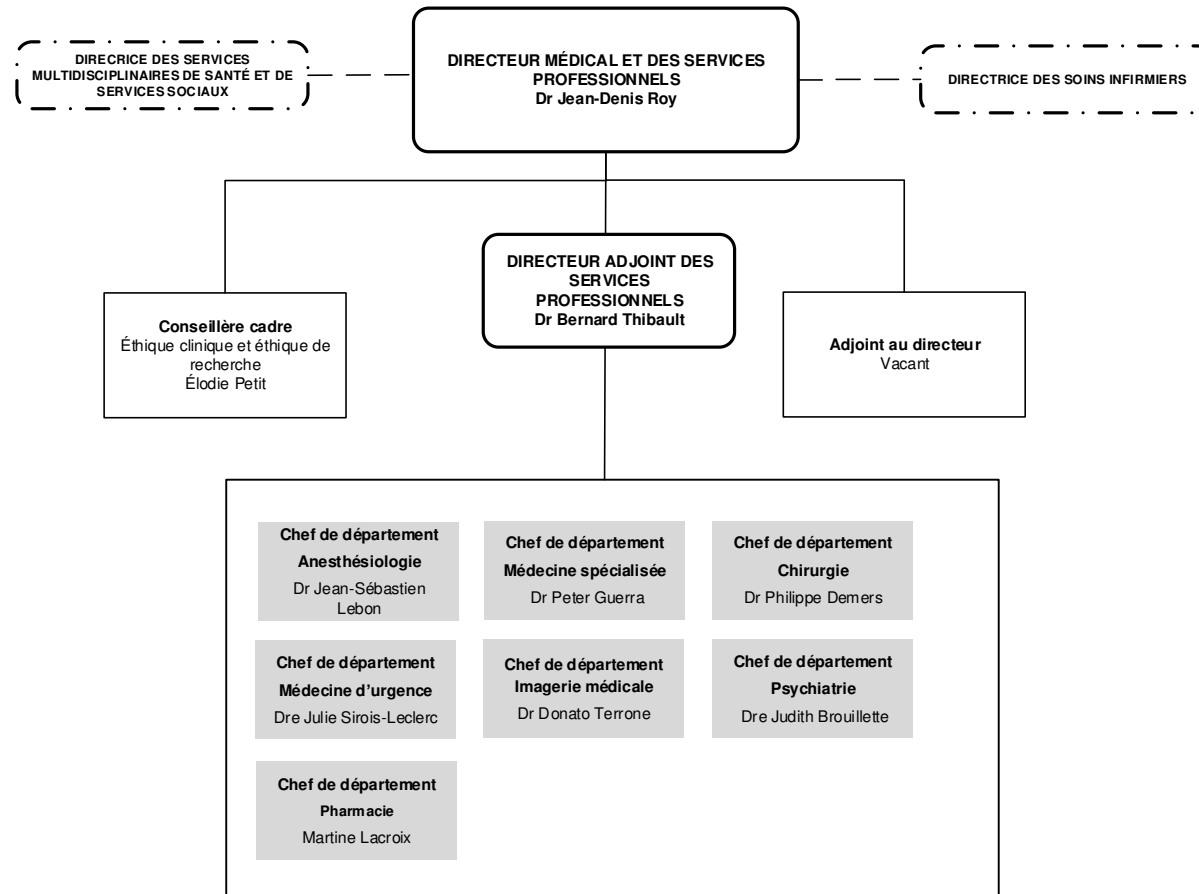


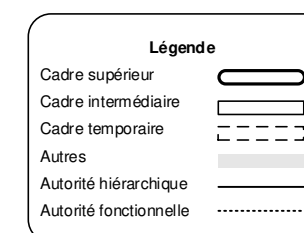
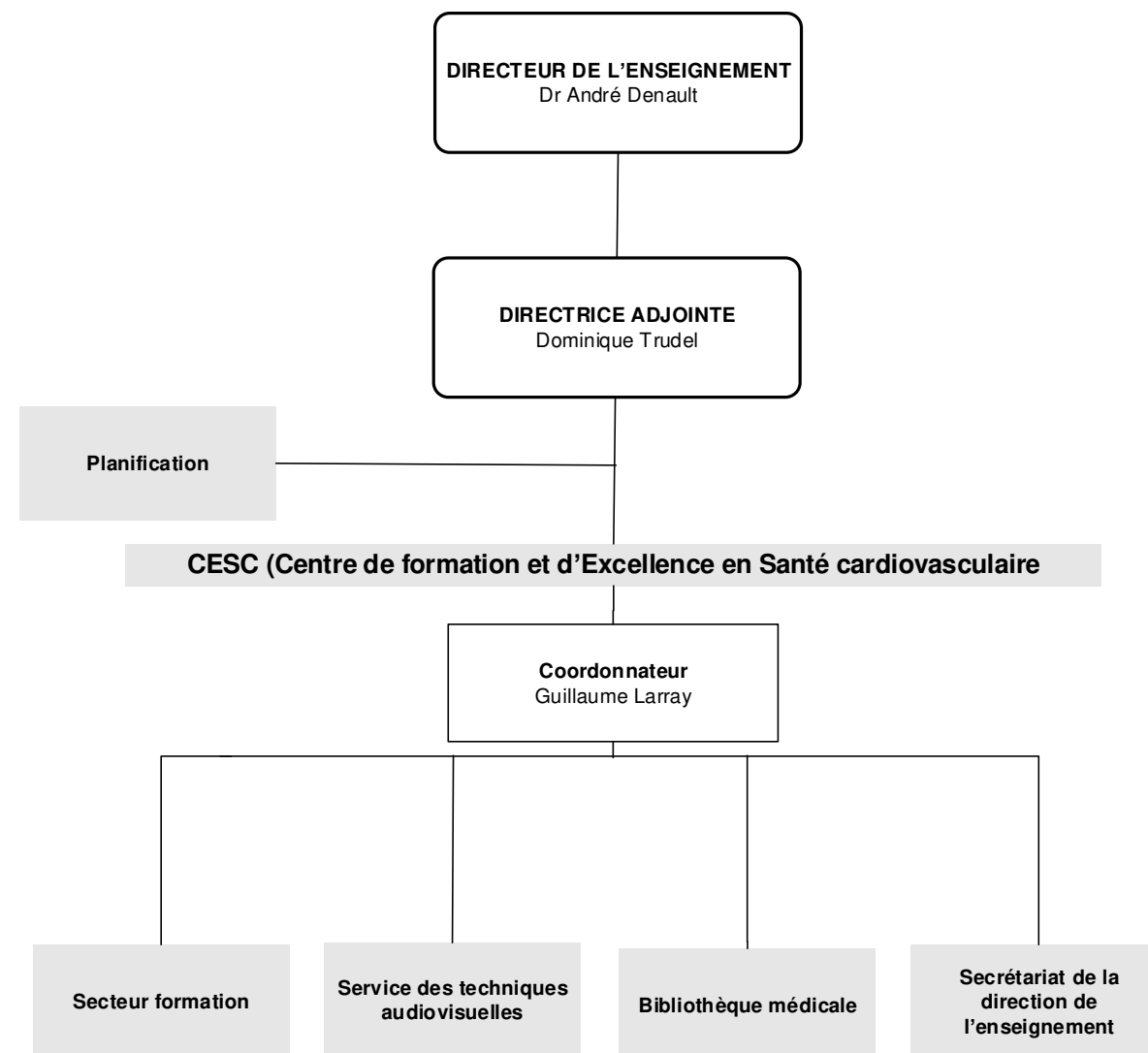
TABLE DES MATIÈRES

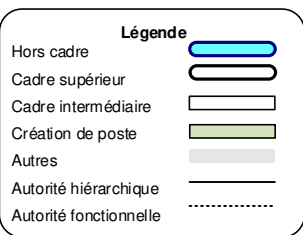
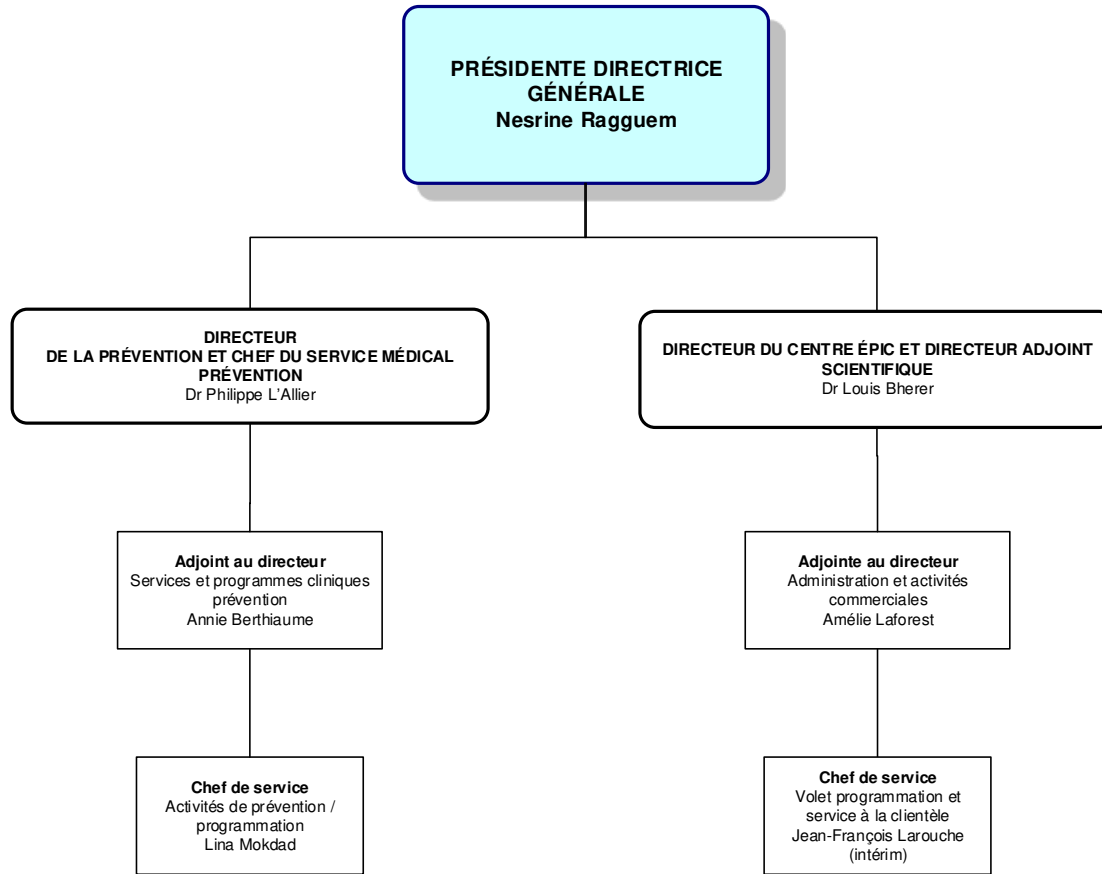
Directions	Page
Direction générale	1
Direction des soins infirmiers	2
Direction des services multidisciplinaires de santé et de services sociaux	3
Direction médicale et des services professionnels	4
Direction de l'enseignement	5
Direction de la prévention	6
Direction des ressources financières	7
Direction des ressources humaines et des affaires juridiques	8
Direction des communications et relations médias	9
Direction des ressources technologiques et informationnelles	10
Direction des services techniques, de la logistique et de l'approvisionnement	11
Direction du Centre de recherche	12

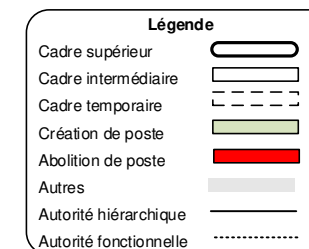
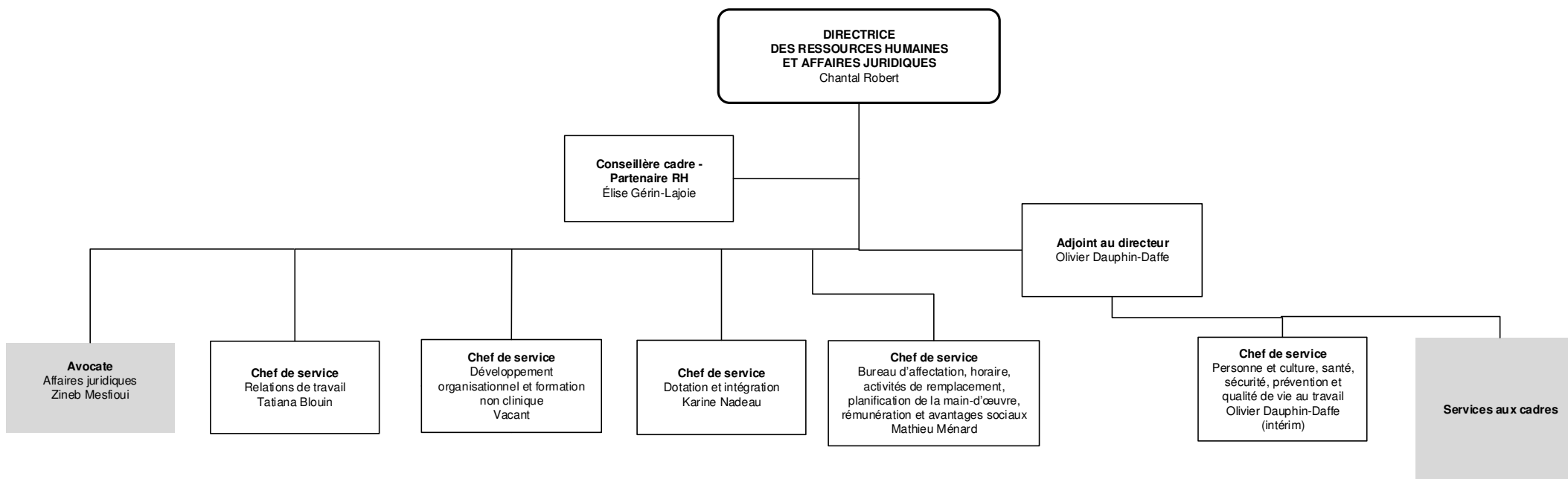


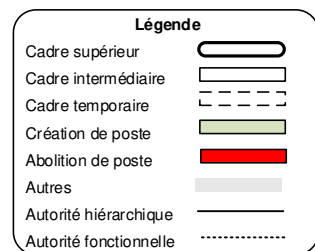
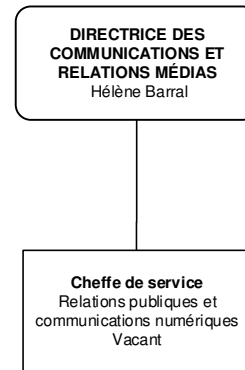


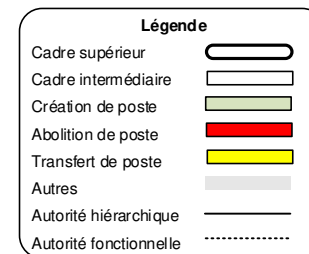
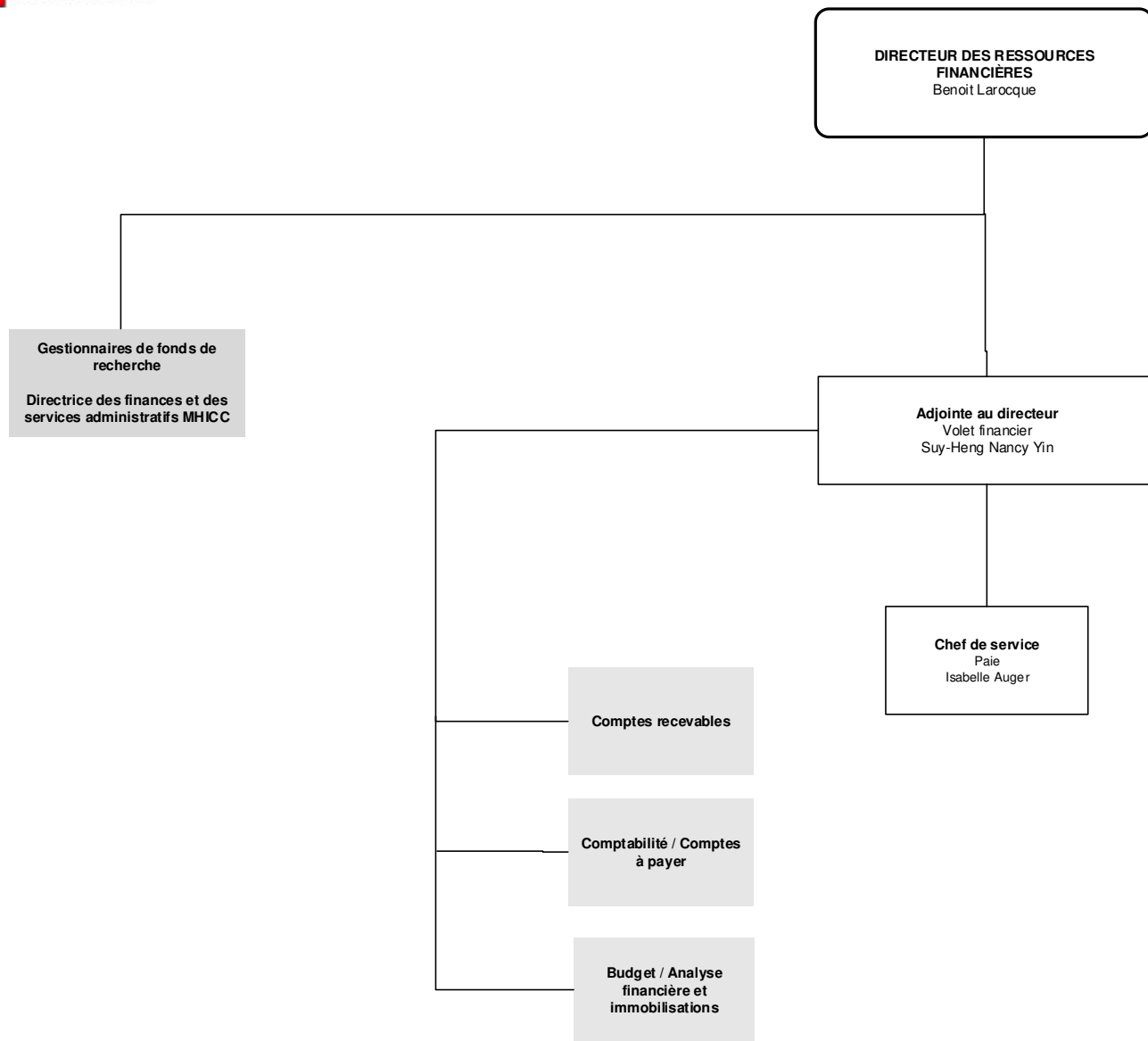


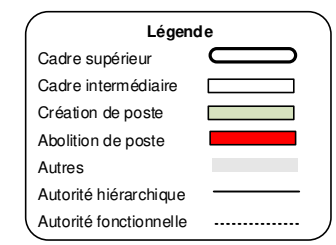
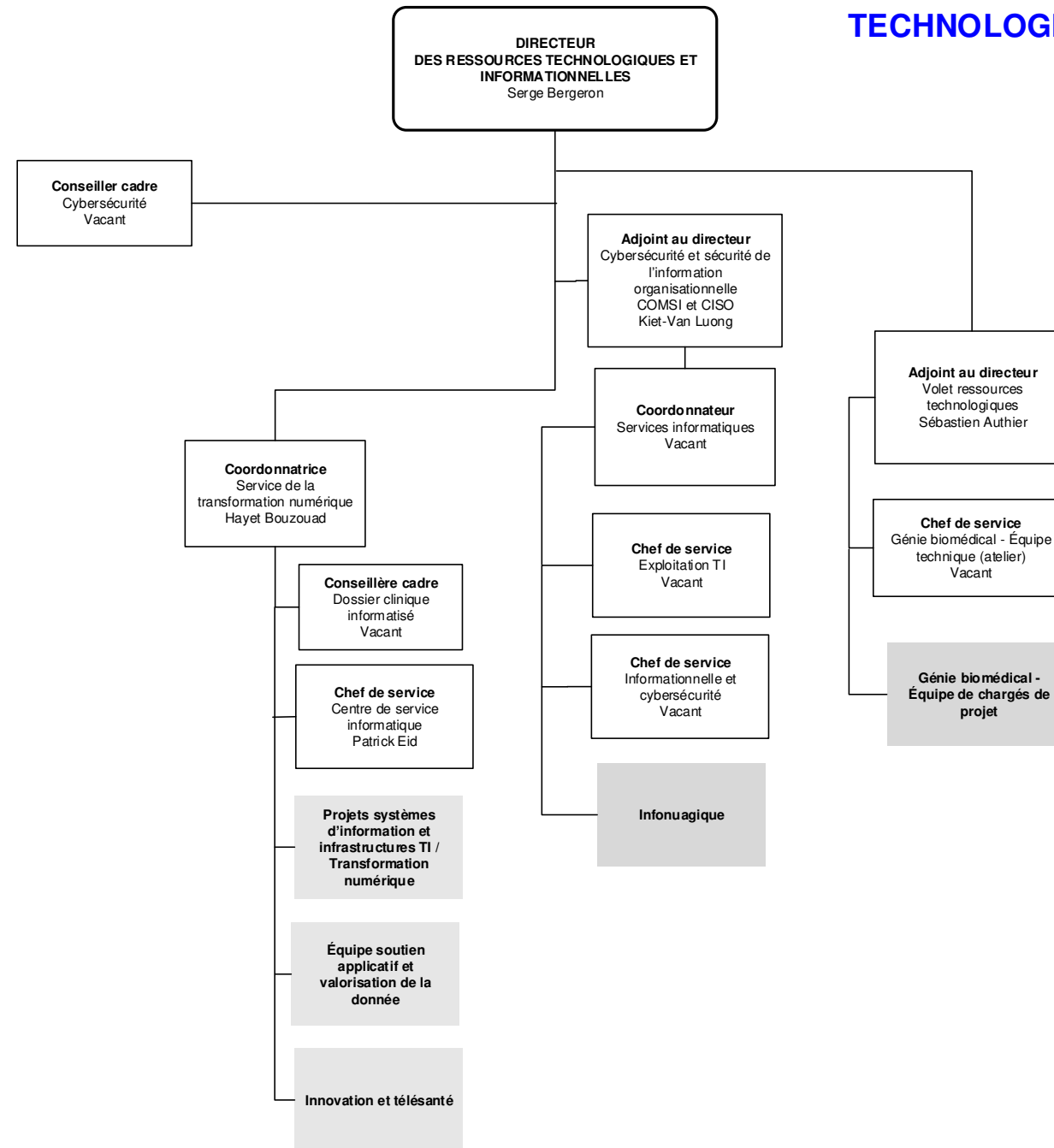


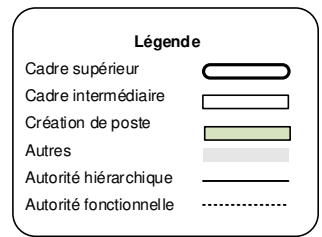
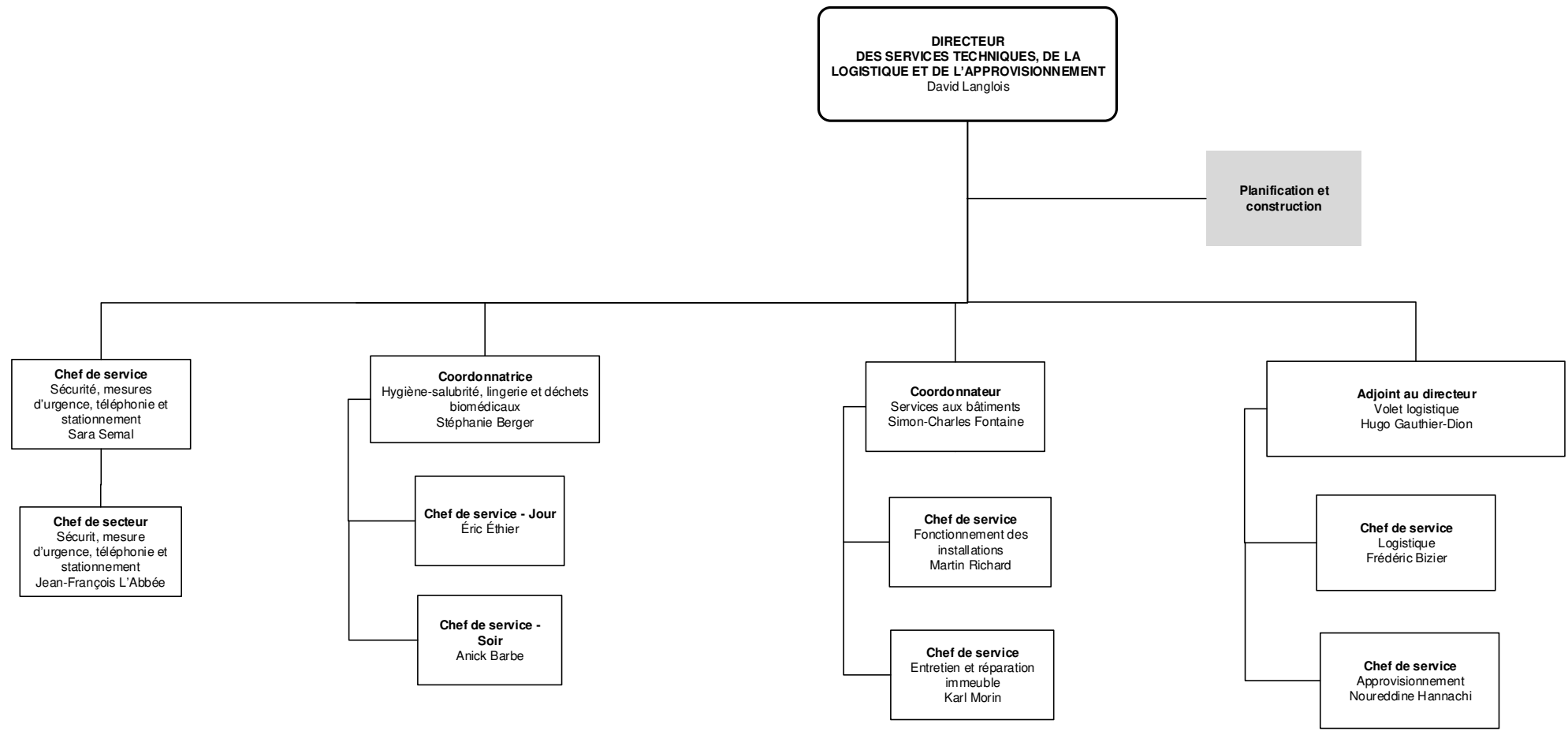


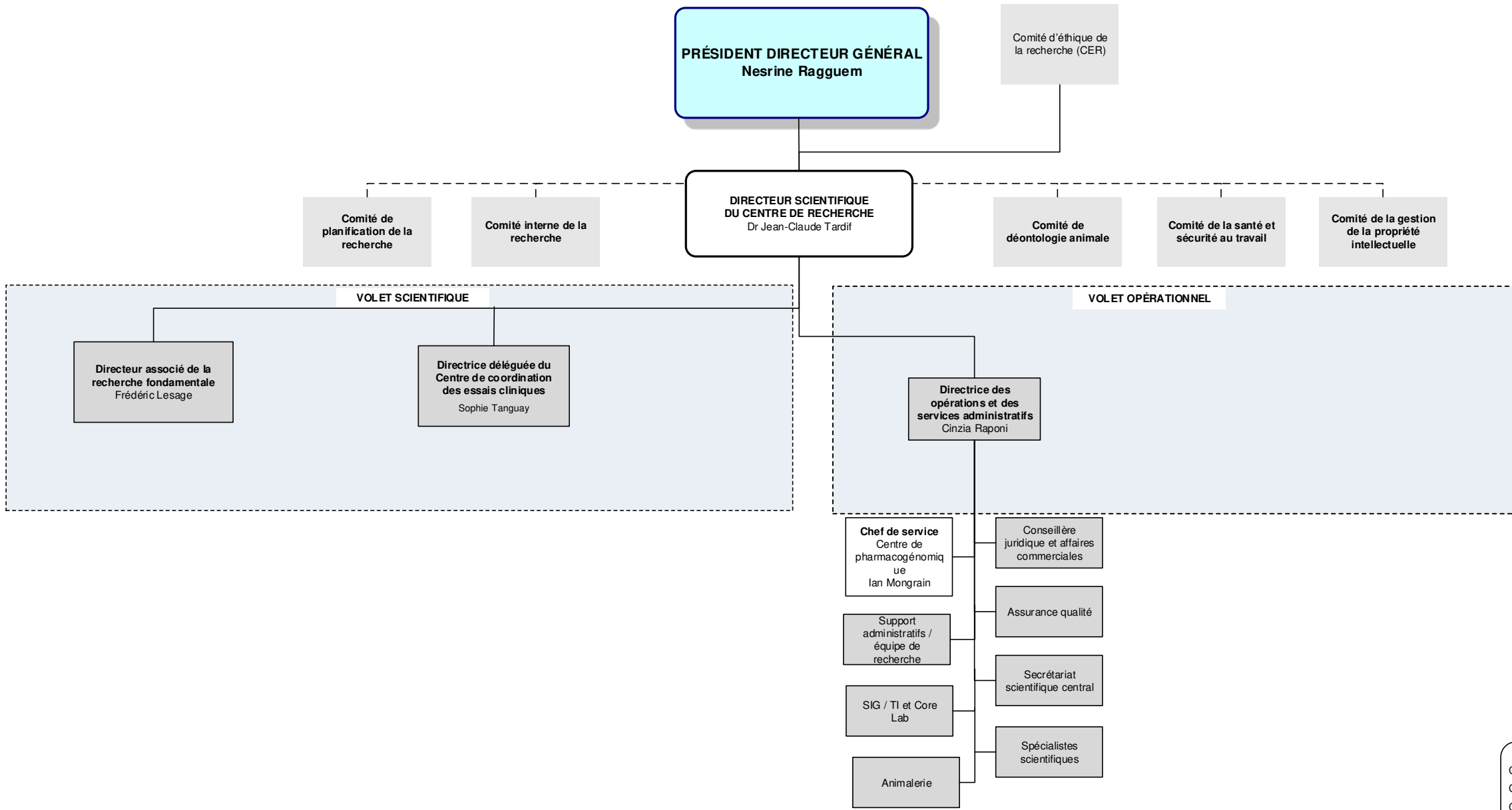












Légende

- Cadre supérieur
- Cadre intermédiaire
- Chercheur avec fonction de direction
- Autres
- Vacant
- Autorité hiérarchique
- Autorité fonctionnelle